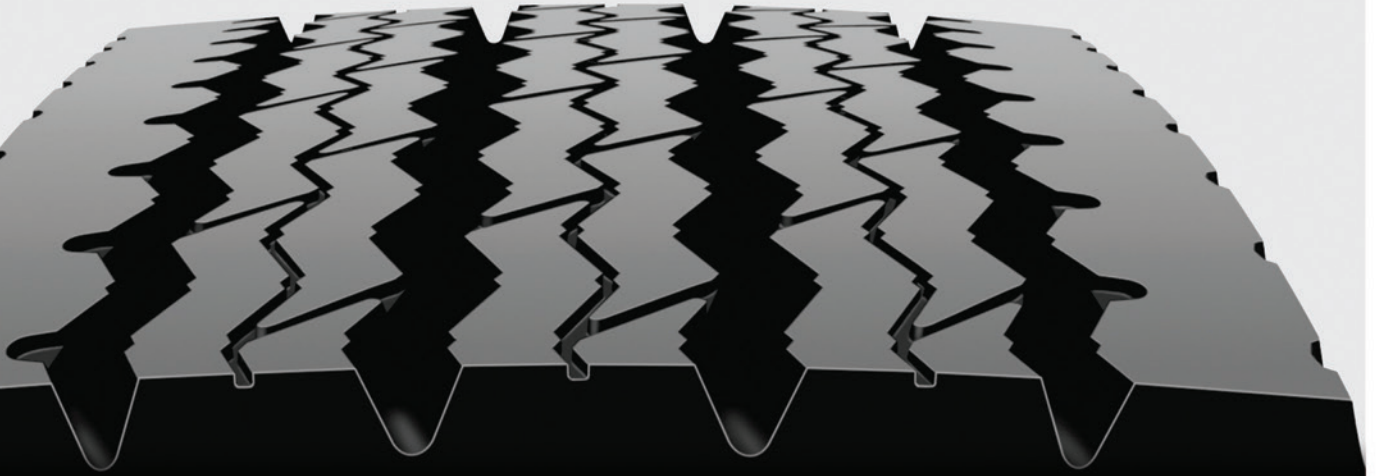


# R244™ *Premium Wide Base All-Position Radial*

Engineered for Severe-Service, On-Highway Regional and Short-Haul Applications



**Smoother ride ■ Wear resistant ■ Excellent retreadability**



## PRECISELY THE RIGHT TIRE.

The R244 is a high-traction radial equally at home on the highway as it is on more unforgiving surfaces. Its rib-type pattern and wide base design allow for that smooth on-highway ride without sacrificing the traction needed on rougher patches of road. Special tread compounds and tread design improve wear resistance from long stretches of asphalt to maneuvering through a job site. It's precisely the right tire to keep your operation rolling smoothly toward a lower total cost of ownership.

## R244 Innovations

**A»**

**A**

### Rib-Type Pattern

Helps deliver a smoother ride, while the wide base design allows you to haul more.

**B»**

**B**

### Thirsty Sipes

Provide tough traction by slicing through water for a solid grip on wet roads.

**C»**

**C**

### Angled Grooves

Provide biting edges that help promote wet traction.

**D»**

**D**

### Continuous Shoulder Design

Distributes weight and torque to fight irregular wear and block squirm for outstanding, even wear.

## Special Tread Compounds

Provide resistance to irregular wear, leading to long life and cutting your cost per mile.

## Optimized Groove Wall Angle

Provides better resistance to stone retention, which helps protect the steel belts and enhances casing durability.

## Sidewall Protector Ribs

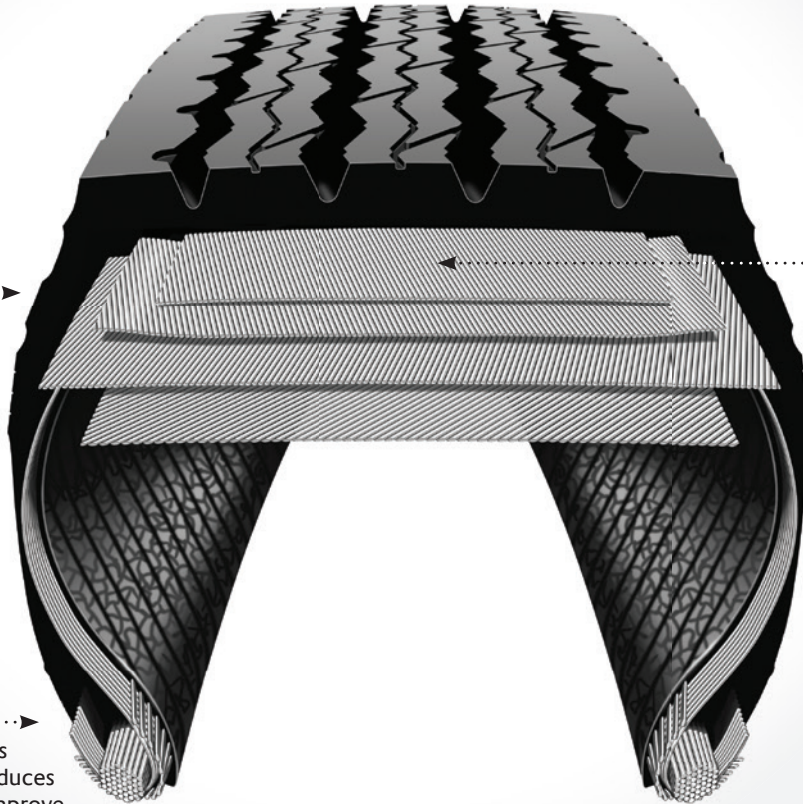
Thick ribs protect the casing by fighting damage from curbing, cuts and abrasions. If one side wears away, flip the tire over for continued protection.

## Optimized Belt Package

Enhances durability and resistance to irregular wear by evenly distributing weight across the footprint.

## Strong Bead Construction

Large bead bundle stiffens the lower sidewall and reduces deflection, which helps improve casing life and retreadability.



R244 Tire Sizes	Load Range	Material Number	Weight (Lbs/kg) <sup>†</sup>	Meas. Rim (in.)	Overall Diameter (in./mm)	Overall Width (in./mm)	Overall Width Loaded (in./mm)	Static Loaded Radius (in./mm)	Revolutions per Mile/km	Tread Depth (32"/mm)	MAX TIRE LOAD		Max Speed (mph/kph)
											Single Lbs@PSI/kg@kPa	Dual Lbs@PSI/kg@kPa	
385/65R22.5 metric	L	225-238	166 75	12.25	42.8 1087	15.3 389	16.8 427	19.8 511	485 303	21 17	9920@130 4500@900	—	65 104
425/65R22.5 metric	L	225-221	184 83	12.25	44.8 1138	16.1 409	17.8 452	20.6 523	464 288	21 17	11400@120 5150@830	—	65 104
445/65R22.5 metric	M	233-687	201 91	13.00	45.8 1163	17.8 452	19.5 495	21.0 541	454 283	21 17	12800@130 5800@900	—	65 104

Warranty information is available at [bridgestonetrucktires.com](http://bridgestonetrucktires.com) or from your Bridgestone representative, dealer or truck stop. <sup>†</sup>Estimated, subject to change.

**Bridgestone Casings & Bandag Retreads: State-of-the-Art Smart.** Pairing your Bridgestone casing with a Bandag retread extends the life of your tires and keeps your money where it belongs — with you. With specialized tread patterns that stand up to your operation's demands, plus cutting-edge compounds that resist wear and tear, Bandag retreads perform like new tires at a fraction of the cost. To get all the facts, scan the code or visit [retreadinstead.com](http://retreadinstead.com).



**Prove it to yourself.** Run the only test that really matters: Try the R244 on your trucks, on your routes and with your drivers — in short, in your world. See for yourself how the R244 can cut your cost per mile. Call your Bridgestone representative today!

